

## BXD SERIES RHEOSTAT

### Feature

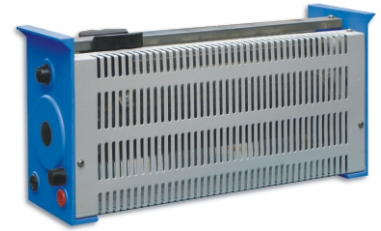
- . 100 scale division to show the resistance setting.
- . Good linearity
- . Fused safety socket of the slide bar
- . Enclose in robust sheet metal cover
- . Sliding contact of coppers graphite
- . More tighter structure
- . New appearance design

### Specifications

- . Max. Working Voltage: 380VAC, 400VDC
- . Resistance tolerance:  $\pm 10\%$
- . Insulation resistance:  $> 3 \times 10^9 \Omega$
- . Earthing resistance:  $< 0.1 \Omega$
- . Rated resistance: see table



**BXD160**



**BXD300**

Model	Power VA	Resistance ( $\Omega$ )	Max. Current	Dimensions (W×H×D)	Ceramic Pipe diameter	Weight kg
BXD160	160	3.3	7A	240×180×195mm	64mm	2.2
		10	4A			
		33	2.2A			
		100	1.25A			
		330	0.7A			
		1000	0.4A			
BXD300	320	3300	0.22A	380×180×100mm	64mm	2.8
		3.3	10A			
		10	5.7A			
		33	3.1A			
		100	1.8A			
		330	1.0A			
BXD600	640	1000	0.57A	480×180×100mm	64mm	3.5
		3300	0.31A			
		10000	0.18A			
		1.6	20A			
		5	11.4A			
		16.5	6.2A			
		50	3.6A			
		165	2A			
500	1.1A					
		1650	0.63A			
		5000	0.36A			

## BXS-A SERIES

### Feature

- . 100 scale division to show the resistance setting
- . Good linearity
- . Enclose in robust sheet metal cover
- . Sliding contact of coppers graphite

### Specifications

- . Max. Working Voltage: 380VAC, 400VDC
- . Resistance tolerance:  $\pm 10\%$
- . Insulation resistance:  $> 3 \times 10^9 \Omega$
- . Earthing resistance:  $< 0.1 \Omega$
- . Rated resistance: see table



**BXS-A150**



**BXS-A600**

Model	Power VA	Resistance ( $\Omega$ )	Max. Current	Dimensions (W×H×D)	Ceramic Pipe diameter	Weight kg
BXS-A150	160	3.3	7A	310×140×95mm	47mm	2
		10	4A			
		33	2.2A			
		100	1.25A			
		330	0.7A			
		1000	0.4A			
BXS-A300	320	3300	0.22A	410×140×95mm	47mm	2.6
		3.3	10A			
		10	5.7A			
		33	3.1A			
		100	1.8A			
		330	1.0A			
BXS-A600	640	1000	0.57A	510×160×100mm	64mm	3.5
		3300	0.31A			
		10000	0.18A			
		1.6	20A			
		5	11.4A			
		16.5	6.2A			
		50	3.6A			
		165	2A			
500	1.1A					
		1650	0.63A			
		5000	0.36A			